

Lifelong Learning Programme *Info Days*

October 2011

ERASMUS

Endika BENGOETXEA (DG EAC)
María Luisa GARCIA MINGUEZ (EACEA)



Education and Culture DG

EACEA
Education, Audiovisual & Culture
Executive Agency



Main policy references in European higher education



Better functioning labour markets; **a more skilled workforce**; better job quality and working conditions; and stronger policies to promote job creation and demand for labour.



To **respond to the challenges young people face** and to help them succeed in the knowledge economy



To improve conditions and access to finance for research and innovation, to ensure that **innovative ideas can be turned into products and services** that create growth and jobs.



- Mobility
- Widening access
- Transparency



EUROPEAN COMMISSION

Brussels, 20.9.2011
COM(2011) 567 final

COMMUNICATION FROM THE COMMISSION TO THE EUROPEAN PARLIAMENT, THE COUNCIL, THE EUROPEAN ECONOMIC AND SOCIAL COMMITTEE AND THE COMMITTEE OF THE REGIONS

Supporting growth and jobs – an agenda for the modernisation of Europe's higher education systems

{SEC(2011) 1063 final}

- HE attainment: **40%**
- Continuing training: **15% of adults**





Key policy messages (1)

■ Increase attainment levels

- Progression routes and recognition of prior learning and experience
- Outreach to underrepresented groups, guidance and targeted financial support
- Reduce drop-out

■ Improve quality and relevance

- Graduate employability
- Tailoring learning modes to a diverse student body
- Motivating and rewarding excellent teachers
- Programmes informed by and adapted to labour market needs





Key policy messages (2)

- **Quality through mobility & international co-operation**
 - Learning mobility windows and moving between programmes

- **Education, research & business for excellence and regional development**
 - Stimulating entrepreneurial, creative and innovation skills and environments
 - Encouraging partnership and co-operation with business
 - Involvement of HE institutions in regional development plans

- **Governance and Funding to support strategic choices**
 - Empowering institutions to play to their strengths





Calls 2011-2013

Multilateral projects

- Cooperation between Higher Education and enterprises
- Social dimension in higher education
- **Develop mobility strategies and remove barriers to mobility**
- Modernisation of higher education (curriculum, governance & funding)
- **Fostering excellence and innovation**

Academic Networks

Accompanying Measures





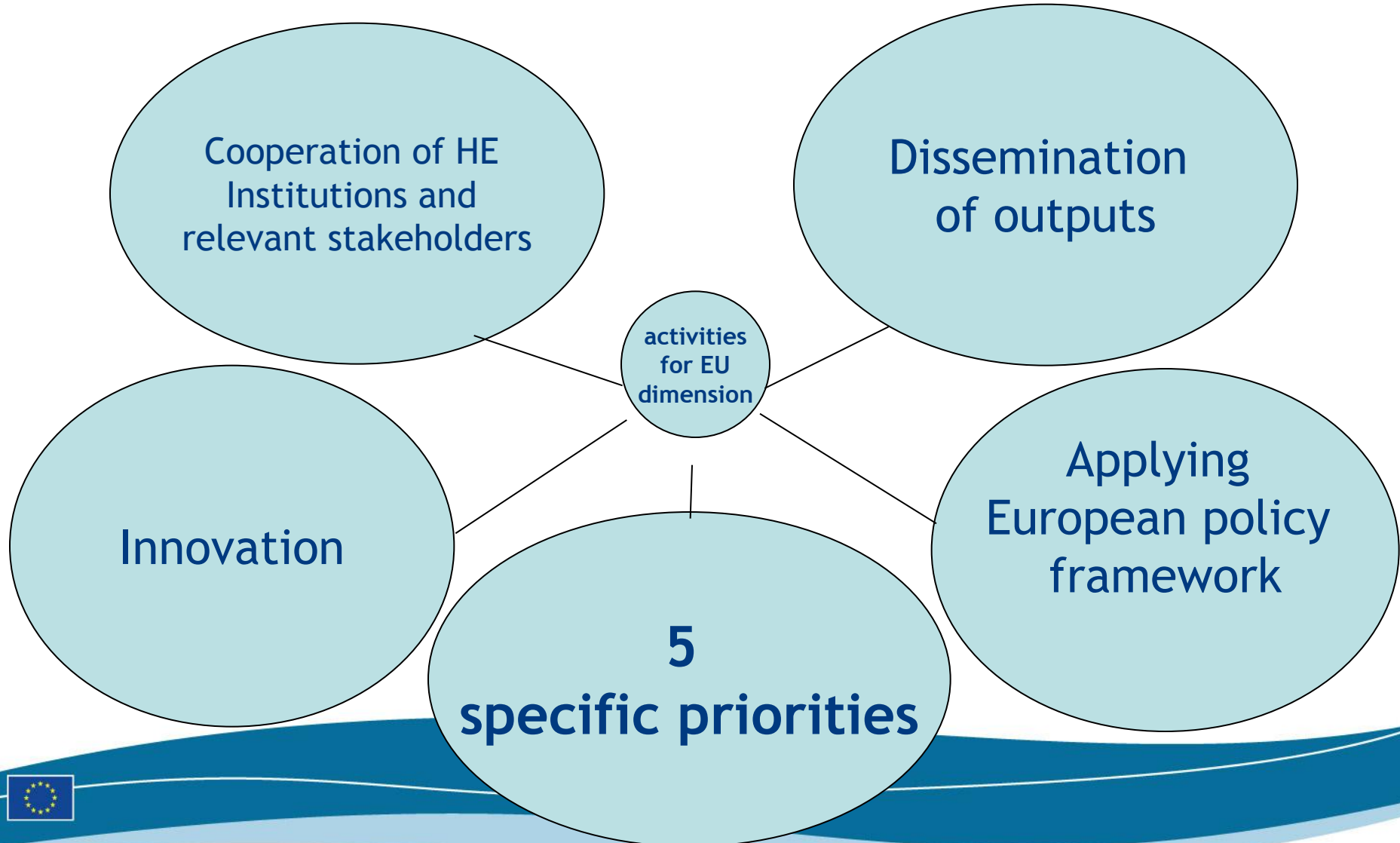
ECTS and Diploma Supplement Labels

- Awarded to HEIs which apply the principles of ECTS and/or DS correctly (NB - not a funding opportunity)
- Annual selection rounds. The indicative deadline for submission of applications in 2012 is 1 October
- More information on the application procedure at http://eacea.ec.europa.eu/llp/support_measures_and_network/ects_dsl_en.php





Multilateral projects





Cooperation between HEI and Enterprises

Supports activities bringing together HEI and partners from outside academia

Preference given to:

- Developing educational services
- Reinforcing link between educational activities and employment needs
 - Including creating business-academia collaborations through "knowledge alliances"





Social dimension in higher education

Preference given to:

- Widening access for underrepresented groups and non-traditional learners
- Systems to monitor the development of widening access for underrepresented groups
- Developing policies to increase completion rates
- Developing flexible provision
- Gender balance
- Developing the social responsibility of HEIs





Mobility strategies and removal of barriers to mobility in higher education

Preference given to:

- Developing strategies to boost learning mobility (mobility windows, multipliers...)
- Analysing and tackling barriers to mobility
- Facilitating availability of information
- Providing open educational resources for virtual campuses
- Strengthening virtual mobility



Support to the modernisation agenda of higher education (1)

Curriculum reform

Preference given to:

- Initiatives and tools to assess and promote graduate employability
- Designing integrated programmes





Curriculum reform

Designing integrated programmes should cover one of:

- (1) a complete cycle of study (bachelor, master or doctoral level) leading to a recognised double or joint degree
- (2) a complete cycle of study on highly interdisciplinary areas
- (3) curricula and modules for continuing education





Support to the modernisation agenda of higher education (2)

Governance reform

Preference given to:

- Facilitating European cooperation in quality assurance
- Enhancing autonomy and accountability for HEIs
- Promoting transparency of diversity and performance
- Improving strategic leadership within higher education institutions





Support to the modernisation agenda of higher education (3)

Funding reform

Preference given to:

- Developing strategies to increase efficiency
- Promoting funding diversification
- Assessing and promoting HE return to investment





Fostering excellence and innovation in HE

Supporting activities addressing the knowledge triangle of education-research-innovation

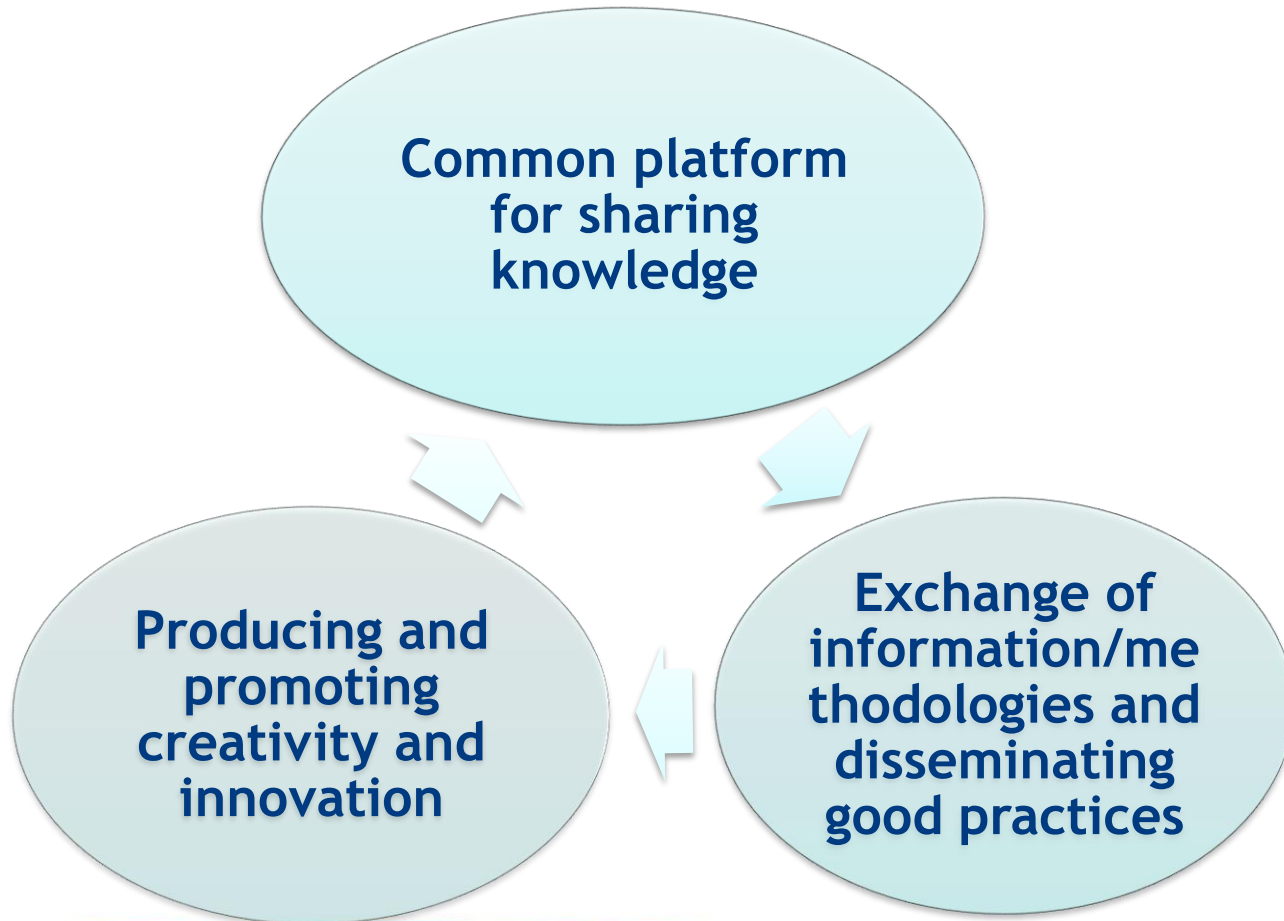
Preference given to:

- Linking teaching and ongoing research
- Providing opportunities for students to work in research settings
- Stimulating innovative and entrepreneurial mindsets for students
- Support the sharing of experience on innovative doctoral programmes





Academic Networks





Networks indicative activities:

Providing an overview of a field

Debating on important aspects of policy and practice, facilitating European cooperation

Defining and updating generic and sectoral competencies

Promoting synergies between teaching and research

Promoting the dissemination of findings and recommendations and their implementation

Reinforcing the link between education and research

Differing from already funded Erasmus Networks (see compendia)





Accompanying Measures





Examples of Accompanying Measures :

Conferences, seminars
and training activities

Awareness-raising
activities ,eg.
Competitions,
promotional campaigns

Studies and analysis

Information and
communication





General conditions

Erasmus Centralised Actions	Maximum EU Grant (75% of total project costs)	Minimum/Maximum project duration	Minimum member of partner organisations
Multilateral projects	New ! 400.000 €	Min: 2 years Max: 3 years	Minimum 3 partners from at least 3 LLP countries (of which at least one must be an EU member state) *
Multilateral networks	600.000 €	Min and max: 3 years	Minimum 25 partners from 25 LLP countries (of which at least one must be an EU member state) *
Accompanying Measures	150.000 €	Min and max: 1 year	One or several institutions (applicant organisation from LLP countries)

* Any third county partner is in addition to the minimum number of LLP countries



Who can apply?



Action	Type of applicant organisations
Erasmus multilateral projects	<ul style="list-style-type: none"> - Higher education institutions holding a full duration Erasmus University Charter - Enterprises (in particular SMEs), professional organisations, chambers of commerce, social partners and local/regional/national bodies - Associations and other relevant organisations active in relation to higher education
Erasmus multilateral networks	<ul style="list-style-type: none"> - Higher education institutions holding a full duration Erasmus University Charter - Public bodies, enterprises, associations and other relevant organisations active in relation to higher education
Erasmus accompanying measures	<ul style="list-style-type: none"> - Higher education institutions holding a full duration Erasmus University Charter - Associations, networks or consortia of higher education institutions and other relevant organisations active in relation to higher education





Erasmus project examples





Lifelong learning in HE



To make lifelong learning a more tangible reality and to help the many European universities that already fulfil conditions for a successful implementation

By working towards international strategies for lifelong learning and the right business models that are needed for a scalable and sustainable approach.

42914-LLP-1-2008-1-NL-ERASMUS-EMHE

www.eadtu.nl/usbm





Transparency in HE

european consortium for accreditation

Mutual recognition of accreditation and quality assurance decisions for joint programmes and institutions operating across borders.

By exploring single accreditation procedures for joint programmes; by analysing current cross-border recognition practices and by offering transparent information on the quality assessment and learning outcomes of joint programmes.

ECA TEAM²

142459-LLP-1-2008-1-NL-ERASMUS-EMHE

www.eaconsortium.net/team2





New skills for new jobs



Setting up a Lifelong Learning framework where a training offer (master programme) was defined and matched to professional needs, while guaranteeing the availability of the most up-to-date services science knowledge builds with the R&D community.

142050-LLP-1-2008-1-LU-ERASMUS-ECUE

www.delliiss.eu





Excellence and innovation

“Stimulating entrepreneurship through Serious Games (eSG)”
518742-LLP-1-2011-1-IT-ERASMUS-FEXI

The goal of eSG is to develop, deploy and assess experimental pedagogical plans based on appealing and instructive SGs for stimulating entrepreneurship in university students (a short course will be implemented for all 3 levels: Bachelor, Master, PhD), with an aim to reduce the gaps among education, research and innovation. An online planning tool will also be developed.





Social dimension

“Access to Lifelong Learning in Higher Education”

517978-LLP-1-2011-1-NL-ERASMUS-ESIN

ALLinHE is about linking the Validation of Prior Learning (VPL) to a practical strategy for social inclusion of underrepresented and non-traditional target groups in higher education (HE).





Network



The LanQua Toolkit has been developed by a network of teachers of languages and related studies across Europe. The 60 partners in the Language Network for Quality Assurance (LanQua) have worked together to map the current landscape for languages in higher education (described in the Frame of Reference) and to reflect on how a subject practitioner-led approach to quality assurance can inform quality assurance processes and enhance the quality of the learning experience for students.

134307-LLP-1-2007-1-UK-ERASMUS-ENW

<http://www.lanqua.eu>





Accompanying Measure



504693-LLP-1-2009-1-BE-ERASMUS-EAM

<http://move-it.euopace.org>

Move-IT “Seminars Promoting Virtual Support for Mobile Students” wanted to maximise the impact of physical mobility by raising awareness of and share knowledge about the benefits of virtual and blended mobility. Through the Move-IT project website, and by organising seminars and other events, the project enabled the exchange of outcomes and results from former projects in order to disseminate the most innovative initiatives and best practices to potential users thereby stimulating the implementation of virtual mobility in mainstream education.



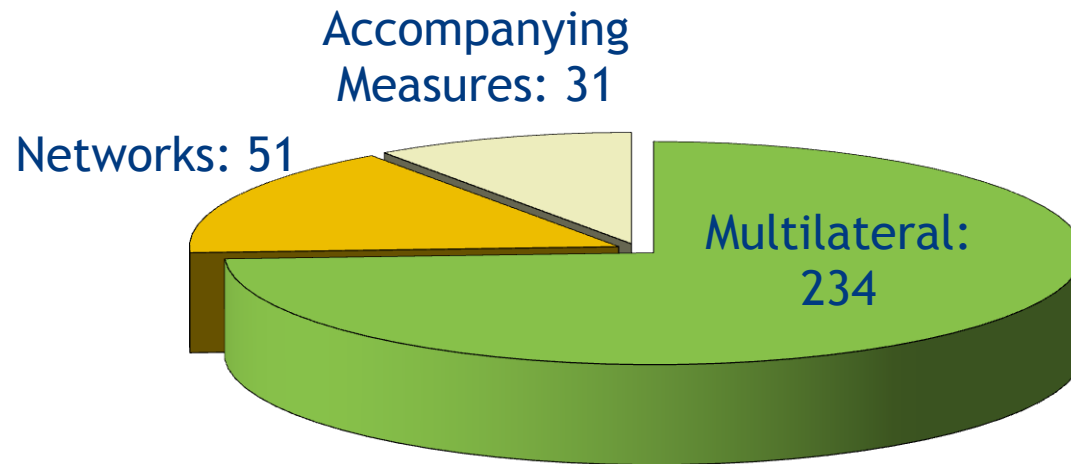


Some observations from previous selections



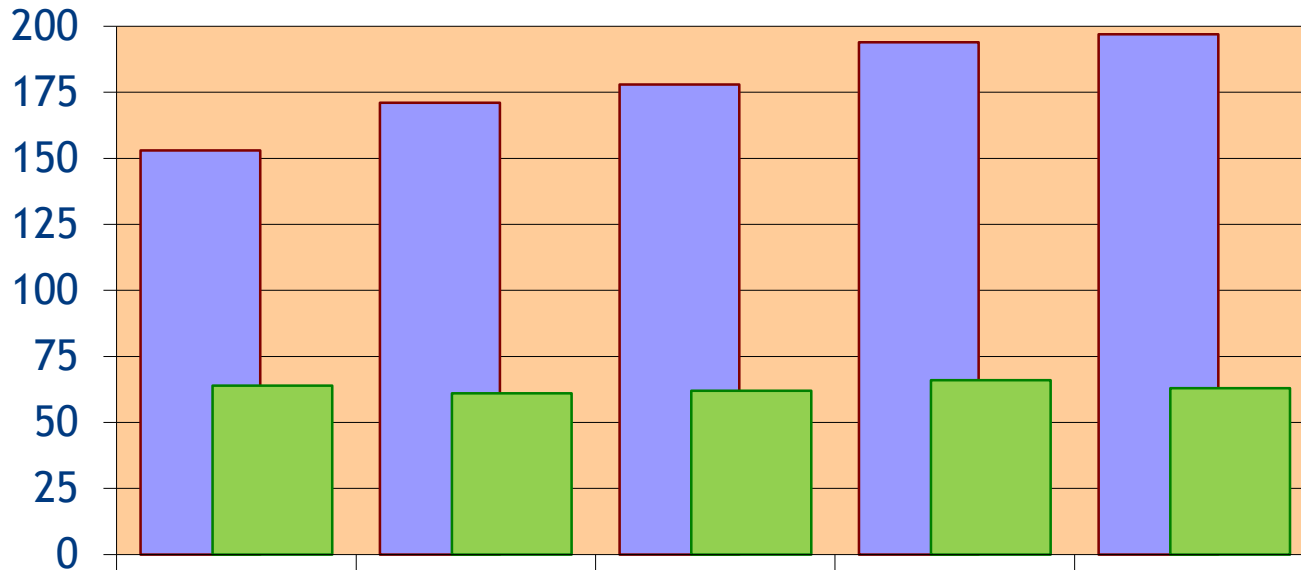


N of Erasmus applications selected 2007-2011





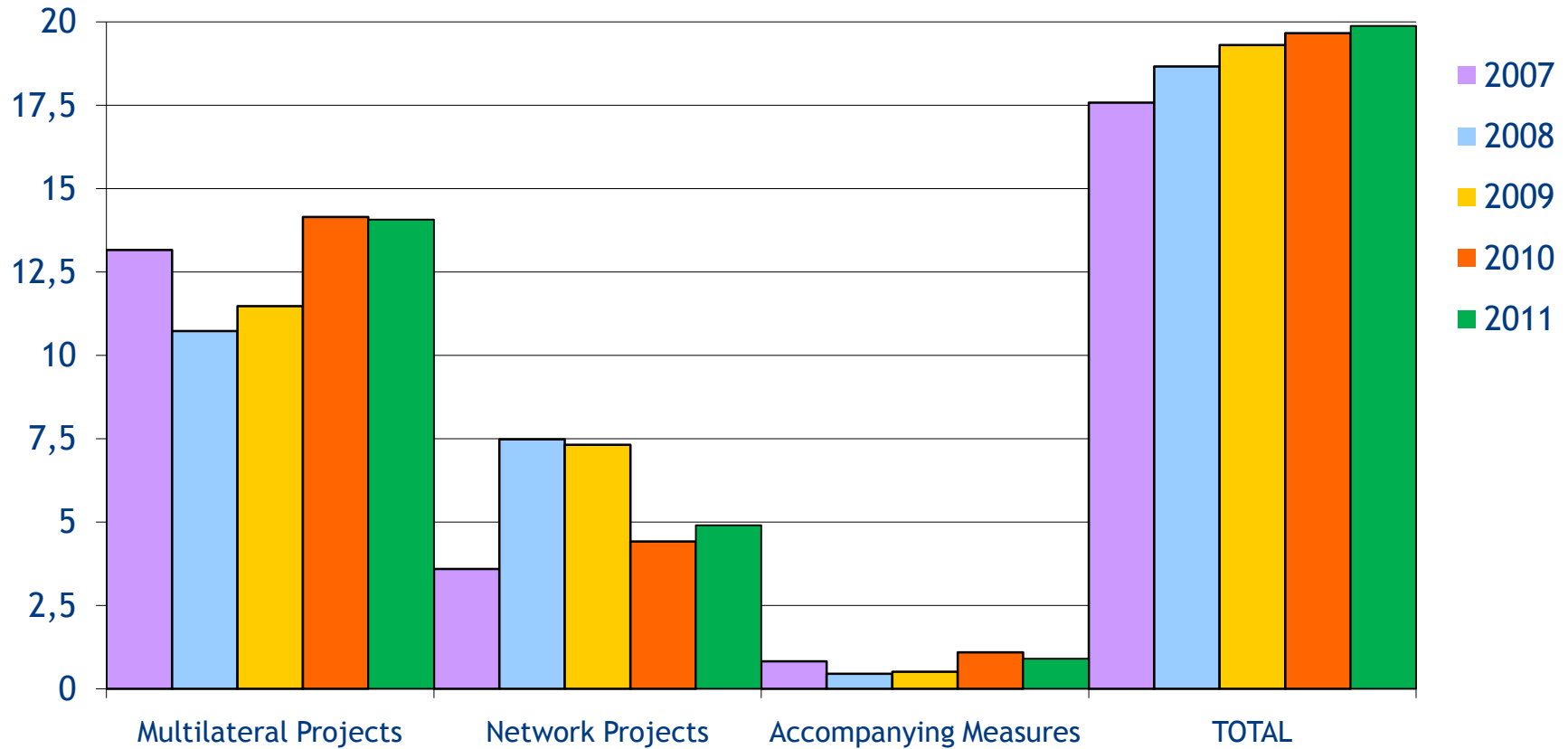
Erasmus Overall Success rates 2007-2011



	2007	2008	2009	2010	2011
Received	153	171	178	194	197
Selected	64	61	62	66	63

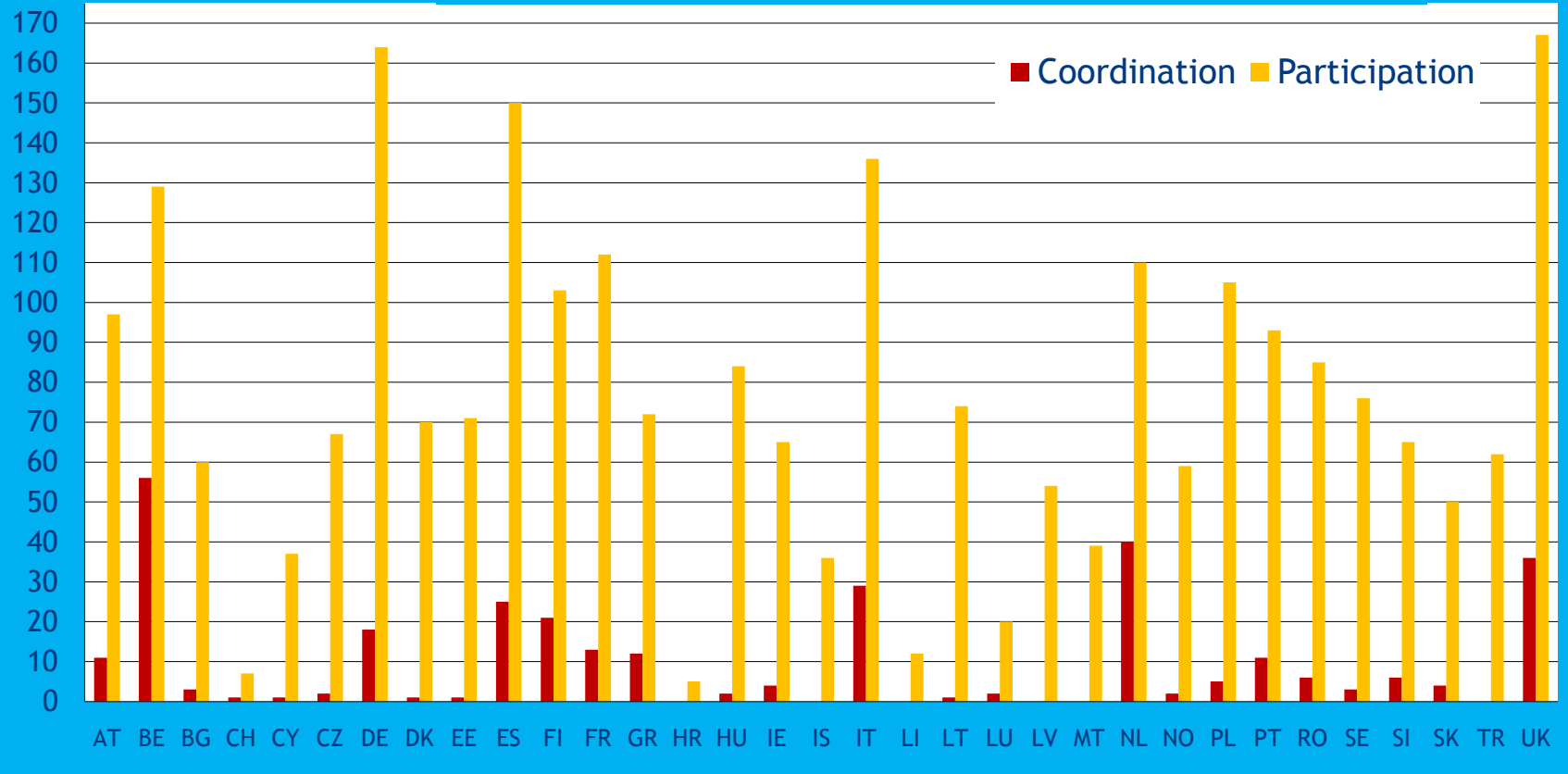


Erasmus 2007-2011 EC Grant Evolution (M €)





Erasmus selected applications per country 2007-2011



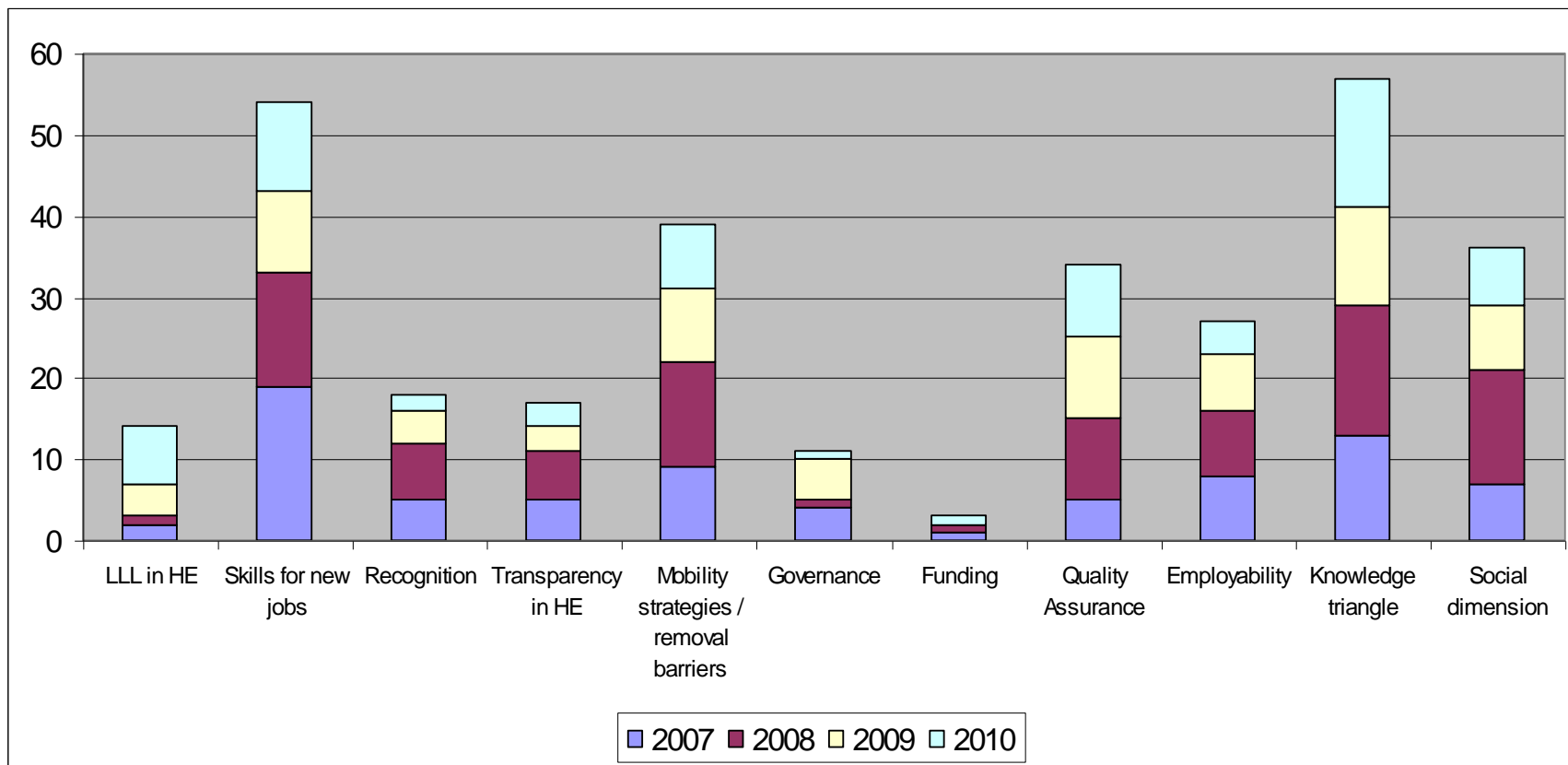


Partnership average

	2007	2008	2009	2010	2011
Networks	52,8	42,4	45,2	62,1	65,3
Multilateral projects	6,18	7,17	7,08	6,19	4,86
Accompanying Measures	14,8	9,3	22,0	6,4	4,9

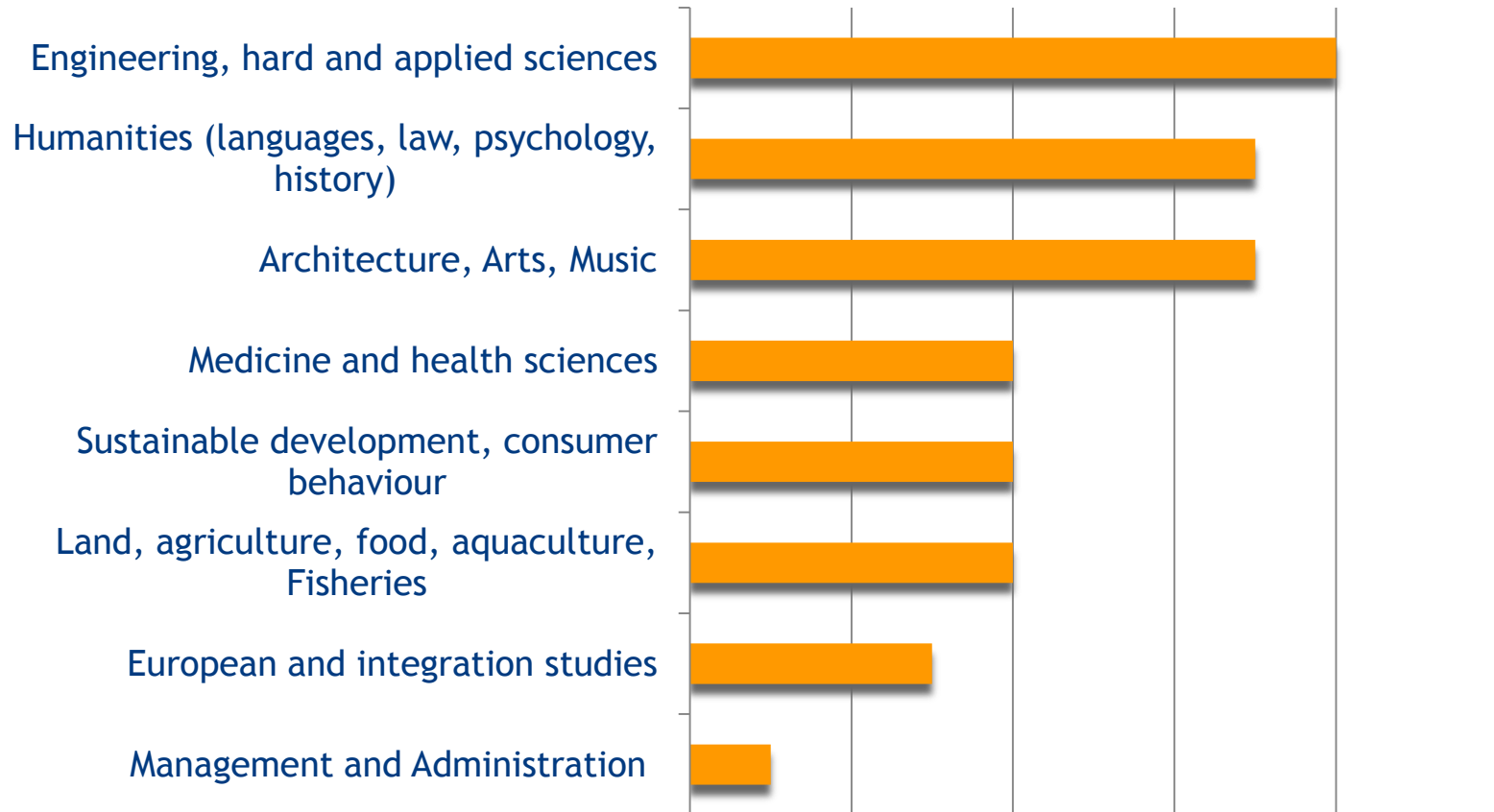


Degree of coverage of HE policy priorities by Erasmus centralised actions

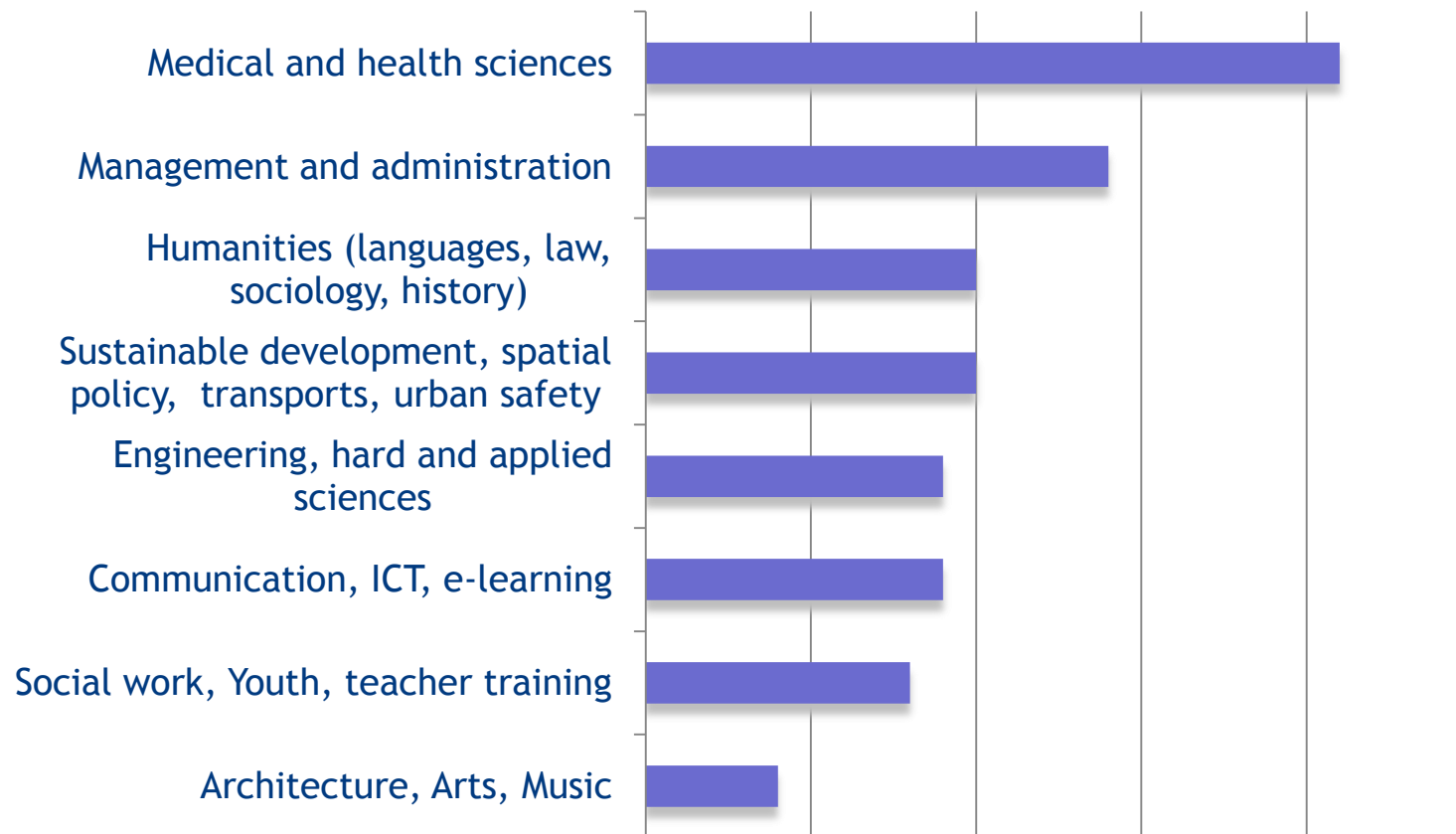




2007-2011 Subject areas *Academic Networks*



2007-2011 Subject areas *Curriculum Development*





Award Criteria

1. Relevance
2. Quality of the work programme
3. Innovative character
4. Quality of the Consortium
5. European added value
6. The cost-benefit ratio
7. Impact
8. Quality of the Valorisation plan
(dissemination and exploitation of results)
9. Participation of organisations from third countries
(optional for Multilateral and Networks only)





A decision will be made to finance the projects receiving the highest scores based on their quality as reflected in the standard award criteria and achieving a balanced coverage of the priorities as explicitly stressed in the Call for proposals.





*A few tips to think about for some of the
award criteria...*





Relevance

- Your application clearly falls within the scope of Erasmus and its priorities
- Objectives and results of your application are clearly described





Innovation

You have to demonstrate that your proposal is offering something new:

- Innovative products
- Innovative processes





Quality of the consortium

You must show that you have put together an effective consortium:

- All partners should make an active and identifiable contribution to the project
- You must demonstrate what each partner brings to the project (e.g. in terms of expertise, complementarity, etc.)





Cost-benefit ratio

- Costs should be listed under the correct budget headings
- Staff days should be appropriately distributed between workpackages and between partners
- Budget should be clearly related to workpackages





Some more tips to think about...



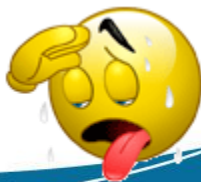


- **Coherent** (problems, solutions, target groups, activities, budget, ambitions/resources/competence)
- **Simple and clear** (identifying the need for such a proposal, the solutions, and the outputs)
- **Evidence based** (ex-ante needs analysis, state of art)
- **Rigorous in its planning** (which activities, when, for how long, and with what resources)
- **Explicit** (do not take for granted any information, if it is not in the application it cannot be taken into account)
- **Clearly-Defined** (a proposal is not about solving the worlds' problems, but about solving a specific issue however complex this might be)





- **Read the Instructions for Applicants and the e-Form Guide**
- Make sure that the project clearly addresses **ONE** policy priority for **Multilateral projects**.
- Skilled project manager (and team).
- Most communications are sent to the co-ordinator's address (contact person): make sure that you indicate the **right person and the right address** (both e-mail and postal) on the application form.
- Send the draft application to **all partners** before submitting it and get their approval.
- If you include partners from candidate countries not yet accepted in the programme, make sure that you still have the **minimum required number of partners without their participation**.
- **Decide: this year or next?**





Preparing a proposal: a coordinator's experience

1. What were the **main steps** in putting together your Erasmus proposal?
2. What **challenges** did you encounter?
3. How did you ensure that the **award criteria** were properly addressed?
4. How much **time** did you need?
5. What's your **top tip** for submitting an application?





Selection 2012: main indicative dates

- Deadline for applications - **2 February 2012, 12:00 PM (midday) CET;**
- Pre-information on the results of the selection process - **June 2012.** Issuing and sending grant agreements to the beneficiaries of selected projects - **September 2012;**
- Starting date for all types of projects - **October 2012.**





Useful links

LLP - Erasmus Programme - Executive Agency (EACEA) Website
http://eacea.ec.europa.eu/llp/erasmus/erasmus_en.htm

LLP - Erasmus Programme - Directory project compendia
http://eacea.ec.europa.eu/llp/results_projects/project_compendia_en.php

